

Allu SML -series



The SML -series has a light construction in order to be suitable for small loaders.

The SML -series have drums with unchangeable blades.

The SML -series is designed for tractors, skid steer loaders and excavators under 7 tons. This model can also be fitted on backhoe loaders.



Allu SML mounted on a small wheel loader.



Allu SML mounted on a backhoe loader.



Allu SML mounted on a skid steer loader.

ALLU functions well in demanding conditions.



Managing Director Valtteri Tikkanen
Hyvinkään Tehtäiska Oy

Our company has operated in the demanding Finnish conditions for dozens of years. During this time, the biggest influence and change in our existing working methods has come from the ALLU Screener Crusher.

The ALLU bucket made it possible for us to handle difficult materials in a way that previously was not possible. We process contaminated soils, stabilize soil bulk and we mix, blend and crush different materials for composting purposes with the ALLU bucket. We also use the ALLU bucket on all our landscaping job sites. On most job sites the ALLU bucket replaces expensive special machines that are difficult to transport.

We get a lot of dug up soil and peeled off soil on our numerous job sites. These materials we process with the ALLU bucket for re-use on the job site or for transportation to another job site or depot. Previously most of this material was handled as waste material which resulted in high waste material costs. Strong construction, high capacity and low operating costs have made the ALLU into an investment that has paid itself back in a short period of time. The ALLU bucket is an essential part of our machine park on the ever more demanding markets.

Valtteri Tikkanen

Valtteri Tikkanen
Hyvinkään Tehtäiska Oy

ALLU DOES IT ALL.

ALLU products for soil improvement



ALLU Screener Crusher
Screening, crushing, mixing, aerating, and loading in one step operation.

ALLU Stabilisation System
Mixing soil and binding agent to mass stabilisation.

ALLU Compacting Plate
High power compacting plate for demanding job sites.

ALLU Windrow Turner
Mixing diverse materials from compact to contaminated soil.



ALLU Finland Oy

Järvenpää 1
16220 Järvenpää, FINLAND
Tel: +358 3 582 1160
Fax: +358 3 582 5400
Email: info@allu.fi

ALLU UK Ltd

17 Vetches Road,
Hilperton Co. Down,
N. IRELAND BT18 9BA
Tel: +44 2890 426 923
Fax: +44 2890 528 855
Email: uk@allu.net

ALLU Deutschland GmbH

Köckenwiesstraße 10
32287 Bünde, GERMANY
Tel: +49 5233 180 150
Fax: +49 5233 180 1515
Email: deutschland@allu.net

ALLU Sales Office: China

1888 Wang Road,
200600 Shanghai, P.R. CHINA
Tel: +86 21 6266 5999
Fax: +86 21 6266 5277
Email: china@allu.net

ALLU France S.A.R.L.

Rue du Docteur Cayrol,
2 rue de la Chapelle de la Roche,
FRANCE
Tel: +33 30 24 04 34
Fax: +33 30 24 04 36
Email: france@allu.net

ALLU South America

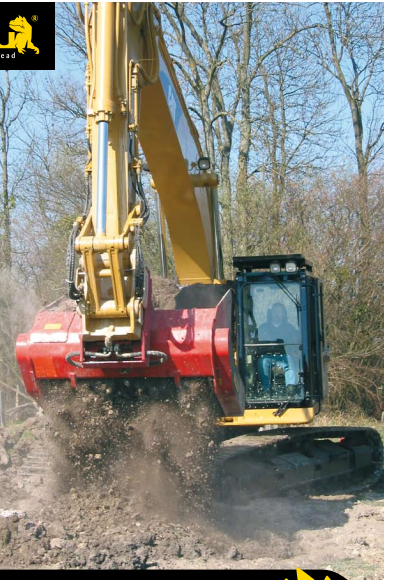
Correó 1070 Paso 7,
C/ O'HANNA Buenos Aires,
ARGENTINA
Tel: +54 11 4805 7387
Fax: +54 11 4805 7387
Email: sudamerica@allu.net

ALLU Group

200 Parker Street, Broomfield,
Haverhill 01830, USA
Tel: +1 (201) 289 2236
Fax: +1 (201) 288 4479
Email: usa@allu.net

ALLU South America

Av. Del Parque 4728, of. 126, Ciudad
Esmeraldas
Santiago, CHILE
Tel: +56 21 248 4620
Fax: +56 21 248 4619
Email: sudamerica@allu.net



Screening
Crushing
Mixing
Aerating
Loading

ALLU SM Screener Crusher



ALLU Screener Crusher. A unique solution for fast and effective utilization of different materials

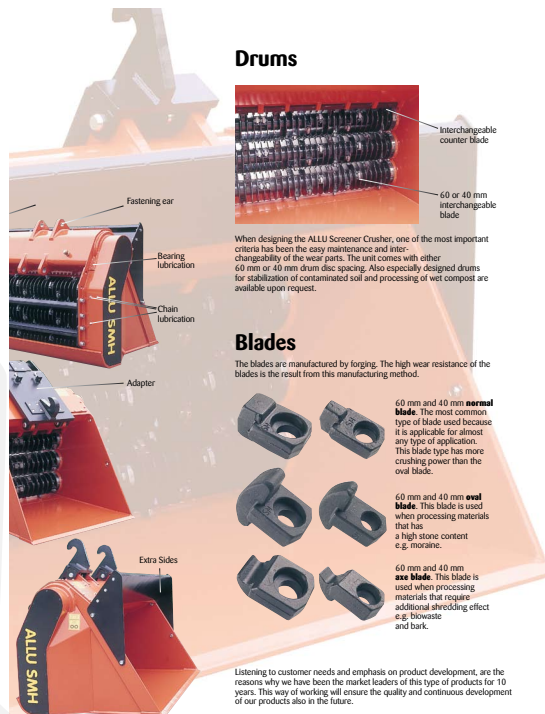
The ALLU screener crusher concept came from the idea to develop an accessory for loaders that would screen, crush, mix and pulverize as many materials as possible.

The reliability, versatility, easy maintenance and service and economic efficiency are the features that make the ALLU screener crusher bucket unique.

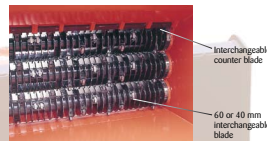
The idea, our continuous product development and our thousands of machines worldwide are things that I am genuinely proud of.



Markku Jonninen
CEO



Drums



When designing the ALLU Screener Crusher, one of the most important criteria has been the easy maintenance and interchangeability of the wear parts. The unit comes with either 60 mm or 40 mm drum disc spacing. Also especially designed drums for stabilization of contaminated soil and processing of wet compost are available upon request.

Blades

The blades are manufactured by forging. The high wear resistance of the blades is the result from this manufacturing method.



60 mm and 40 mm normal blade. The most common type of blade used because it is applicable for almost any type of application. This blade type has more crushing power than the oval blade.

60 mm and 40 mm oval blade. This blade is used when processing materials that has a high stone content e.g. moraine.

60 mm and 40 mm axe blade. This blade is used when processing materials that require additional shredding effect e.g. bio-waste and bark.

Listening to customer needs and emphasis on product development, are the reasons why we have been the market leaders of this type of products for 10 years. This way of working will ensure the quality and continuous development of our products also in the future.

Light SML



- light construction small base machines
- light applications
- screening of soil
- landscaping

Standard SM



- robust construction
- middle sized and big base machines
- heavy applications
- screening of topsoil
- stabilization
- processing of compost
- crushing of bark
- crushing of glass and bricks
- also the SML applications

Heavy Duty SMH



- very robust construction
- big base machines
- very heavy applications
- processing of contaminated soil
- crushing of lightweight concrete
- crushing of glass and bricks
- processing of black top
- also the SML & SM applications.

Model	Bare Machine	Volume	Weight	Hyd. Pumps	Screening Area	Blades pcs		Drum Width cm	Power Continuous/ Peak kW
						60 mm Drums	40 mm Drums		
TRACTORS AND SKID STEERS (also for S-10 t backhoe loaders)									
SML 2-12	2.5	0.4	420	40-60	0.6	36	1390	20/37	
SML 2-17	4.7	0.6	525	40-60	0.8	52	1890	20/37	
13 - 35 t EXCAVATORS									
SM 2-12	13-16	0.7/0.8	1120	80-130	0.7	32	44	1520	50/60
SM 2-17	16-21	0.9/1.1	1380	80-130	1.0	48	68	2060	50/60
SM 3-12	16-21	1.0/1.2	1340	110-165	1.0	48	66	1520	60/70
SM 3-17	21-25	1.4/1.6	1640	110-165	1.4	72	102	2060	60/70
SM 4-12	21-25	1.3/1.5	1580	110-165	1.3	64	88	1520	60/70
SM 4-17	25-30	1.9/2.2	1940	140-210	1.8	96	136	2060	60/70
SMH 3-12	21-25	1.0/1.2	1690	165-260	1.0	48	66	1620	100/120
SMH 3-17	25-30	1.4/1.6	2080	165-260	1.4	72	102	2160	100/120
SMH 4-12	25-30	1.3/1.5	1990	165-260	1.3	64	88	1620	100/120
SMH 4-17	29-34	1.9/2.2	2450	165-260	1.9	96	136	2160	100/120
6 - 23 t WHEEL LOADERS									
SM 2-12	6.9	0.7/0.8	1120	80-130	0.7	32	44	1520	50/60
SM 2-17	7.10	0.9/1.1	1380	80-130	1.0	48	68	2060	50/60
SM 2-23	9-12	1.2/1.4	1630	80-130	1.3	64	92	2390	50/60
SM 3-12	7-10	1.0/1.2	1340	110-165	1.0	48	66	1520	60/70
SM 3-17	9-12	1.4/1.6	1640	110-165	1.4	72	102	2060	60/70
SM 4-12	9-12	1.3/1.5	1580	110-165	1.3	64	88	1520	60/70
SM 4-17	11-14	1.9/2.2	1940	140-210	1.8	96	136	2060	60/70
SM 3-23	13-14	1.8/2.1	1950	140-210	1.8	96	138	2390	60/70
SM 3-27	13-16	2.1/2.5	2290	140-210	2.1	114	162	3000	60/70
SM 4-23	13-16	2.5/3.0	2360	140-210	2.3	128	184	2690	60/70
SM 4-27	15-20	2.9/3.5	2720	140-210	2.7	152	216	3000	60/70
SMH 3-17	11-14	1.4/1.6	2080	165-260	1.4	72	102	2160	100/120
SMH 3-23	13-16	1.8/2.1	2500	165-260	1.8	96	138	2690	100/120
SMH 3-27	15-20	2.1/2.5	2860	220-330	2.1	114	162	3090	120/140
SMH 4-23	15-20	2.5/3.0	2920	220-330	2.3	128	184	2690	120/140
SMH 4-27	18-23	2.9/3.5	3360	280-420	2.7	152	216	3090	120/140

NOTE! VOLUME INCREASES 30% WITH EXTRA SIDES